

TECHNICAL FEATURES

Diameters & Mounting Type

- DN85, DN118, DN127 and DN162
- adjustable angle

Housing

- #BTA-1-W & #BTA-2-W:
un-polished AISI 304 stainless steel
- #BTA-1-C & #BTA-2-C:
un-polished AISI 316 stainless steel
- thickness 0.8mm for crimped ring
- thickness 1.0mm for bayonet ring

Ring

- bayonet type
#BTA-1-W:
un-polished AISI 304 stainless steel
#BTA-1-C:
un-polished AISI 316 stainless steel
- crimped type
#BTA-2-W:
un-polished AISI 304 stainless steel
#BTA-2-C:
un-polished AISI 316 stainless steel

Window

- standard: tempered glass
- option: see ordering information

Dial

- aluminum material, with stop pin
- custom dial layout
- flat type as standard
- non-parallax type as option

Pointer

- aluminum material, black finished,

Zero Adjustment

- by adjustable pointer

Sensitive Bulb

- material:
#BTA-1-W & #BTA-2-W :
AISI 304 stainless steel ;
#BTA-1-C & #BTA-2-C:
AISI 316 stainless steel ;
- dial: $\Phi 6.5 - \Phi 9.5\text{mm}$;
- length: 2-1/2" - 50"

Filling Liquid

- standard: no liquid filled
- option: glycerin or silicone filled

Welding

- argon arc welding

Connection Type

- male thread;
- plain stem;
- male nut;
- union nut;
- compression fitting(sliding on stem);
- union nut with fitting.

Temperature Element

- bimetal helix;

Thermowell

- not contain
- please check thermowell pages

Temperature Range

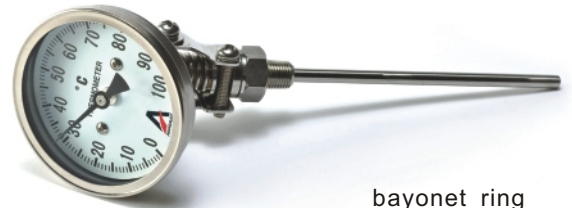
- $> -50^{\circ}\text{C}$ to $< 650^{\circ}\text{C}$

Accuracy

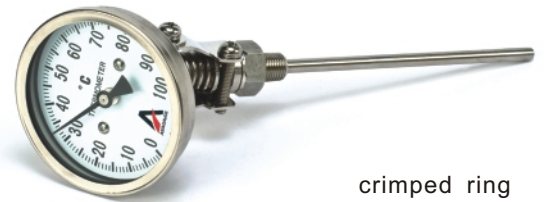
- $\pm 1.0\%$ of full scale

Over-temperature

- plus 50°C of full scale

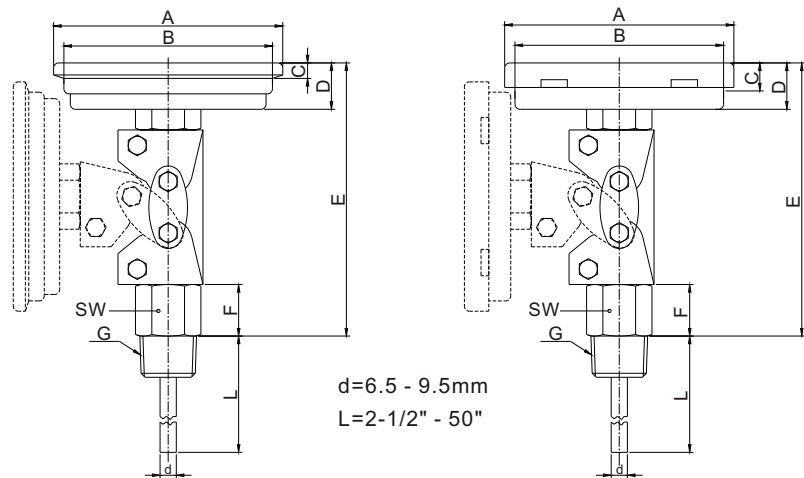


bayonet ring



crimped ring

DIMENSION DRAWING



d=6.5 - 9.5mm
L=2-1/2" - 50"

in mm

DN	A	B	C	D	E	F	G
85	85	77.5	6.5	16	85	8.5	1/4
118	115.5	108	7	20	89	12.5	1/2

in mm

DN	A	B	C	D	E	F	G
85	83	74.5	10.5	16	85	8.5	1/4
118	119	108	11.5	20	89	12.5	1/2
127	127	119.5	10	18	86.5	12.5	1/2
160	158.5	145.5	10	17.5	86.5	12.5	1/2

MODEL #BTB SERIES BOTTOM ENTRY STEM TYPE
TECHNICAL FEATURES
Diameters & Mounting Type

- DN85, DN118, DN127 and DN162
- bottom entry

Housing

- #BTB-1-W :
un-polished AISI 304 stainless steel
- #BTB-1-C :
un-polished AISI 316 stainless steel
- thickness 1.0mm for bayonet ring

Ring

- bayonet type
- #BTB-1-W :
un-polished AISI 304 stainless steel
- #BTB-1-C :
un-polished AISI 316 stainless steel

Window

- standard: tempered glass
- option: see ordering information

Dial

- aluminum material, with stop pin
- custom dial layout
- flat type as standard
- non-parallax type as option

Pointer

- aluminum material, black finished,

Zero Adjustment

- by adjustable pointer

Sensitive Bulb

- material:
#BTB-1-W :
AISI 304 stainless steel ;
#BTB-1-C :
AISI 316 stainless steel ;
- dial: $\Phi 6.5 - \Phi 9.5$ mm;
- length: 2-1/2" - 50"

Filling Liquid

- standard: no liquid filled
- option: glycerin or silicone filled

Welding

- argon arc welding

Connection Type

- male thread;
- plain stem;
- male nut;
- union nut;
- compression fitting(sliding on stem);
- union nut with fitting.

Temperature Element

- bimetal helix;



bayonet ring

Thermowell

- not contain
- please check thermowell pages

Temperature Range

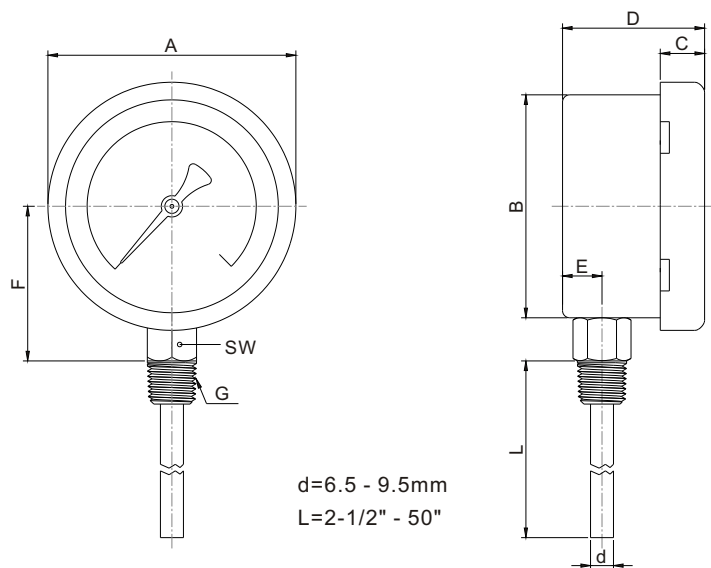
- $> -50^{\circ}\text{C}$ to $< 650^{\circ}\text{C}$

Accuracy

- $\pm 1.0\%$ of full scale

Over-temperature

- plus 50°C of full scale

DIMENSION DRAWING


DN	85	118	127	160
A	85	119	127	158.5
B	75.5	108	115	145.5
C	10.5	11.5	10	10
D	48	50	50	46.5
E	19.3	19.3	19.3	18.25
F	51	72	76	91.5
G	1/4	1/2	1/2	1/2



BIMETAL THERMOMETER

MODEL #BTC SERIES BACK ENTRY STEM TYPE

TECHNICAL FEATURES

Diameters & Mounting Type

- DN35, DN58, DN83, DN115, DN127 and DN162
- back entry angle

Housing

- #BTC-1-W & #BTC-2-W: un-polished AISI 304 stainless steel
- #BTC-1-C & #BTC-2-C: un-polished AISI 316 stainless steel
- thickness 0.8mm for crimped ring
- thickness 1.0mm for bayonet ring

Ring

- bayonet type
- #BTC-1-W : un-polished AISI 304 stainless steel
- #BTC-1-C: un-polished AISI 316 stainless steel
- crimped type
- #BTC-2-W : un-polished AISI 304 stainless steel
- #BTC-2-C: un-polished AISI 316 stainless steel

Window

- standard: tempered glass
- option: see ordering information

Dial

- aluminum material, with stop pin
- custom dial layout
- flat type as standard
- non-parallax type as option

Pointer

- aluminum material, black finished,

Zero Adjustment

- by adjustable pointer

Sensitive Bulb

- material:
 - #BTC-1-W & #BTC-2-W : AISI 304 stainless steel;
 - #BTC-1-C & #BTC-2-C: AISI 316 stainless steel;
- dial: $\Phi 6.5 - \Phi 9.5\text{mm}$;
- length: 2-1/2" - 50"

Filling Liquid

- standard: no liquid filled
- option: glycerin or silicone filled

Welding

- argon arc welding

Connection Type

- male thread;
- plain stem;
- male nut;
- union nut;
- compression fitting(sliding on stem);
- union nut with fitting.

Temperature Element

- bimetal helix;
- Thermowell**
- not contain
- please check thermowell pages

Temperature Range

- $> -50^{\circ}\text{C}$ to $< 650^{\circ}\text{C}$

Accuracy

- $\pm 1.0\%$ of full scale

Over-temperature

- plus 50°C of full scale

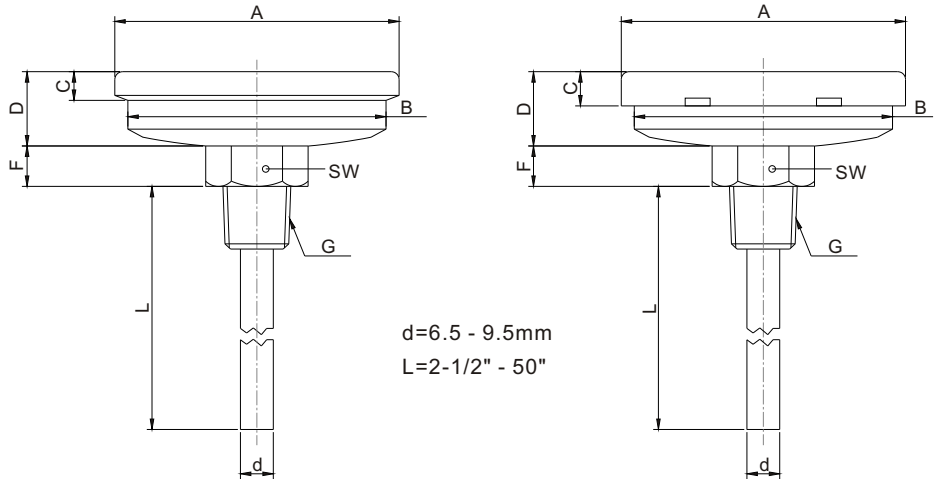


crimped ring



bayonet ring

DIMENSION DRAWING



in mm

DN	A	B	C	D	F	G
58	57.5	52.5	6.5	15	8.5	1/4
85	83	77.5	6.5	16	8.5	1/4
118	115.5	108	7	20	12.5	1/2

in mm

DN	A	B	C	D	F	G
85	83	74.5	10.5	17	8.5	1/4
118	119	108	11.5	20	12.5	1/2
127	127	119.5	10	18	12.5	1/2
160	158.5	145.5	10	17.5	12.5	1/2